

When Tibet Fought for India

The Tibetan Special Frontier Force



On the Siachen Glacier



Insigna of the SFF



Maj. Gen. S.S. Uban, first Inspector General of the Special Frontier Force

The Special Frontier Force (SSF) is a Tibetan paramilitary force created on November 14, 1962, during the Sino-Indian conflict. It is the brain-child of B.N.Mullik, the then Director of the Intelligence Bureau, who convinced Nehru to raise an elite commando regiment specialised in mountain warfare. It had an initial strength of 5,000 men.



The first years...



The SFF is known as 'Establishment 22' after its first Inspector General, Maj. Gen. Sujan Singh Uban who commanded 22 Mountain Brigade during WW II.



Training in mountain warfare

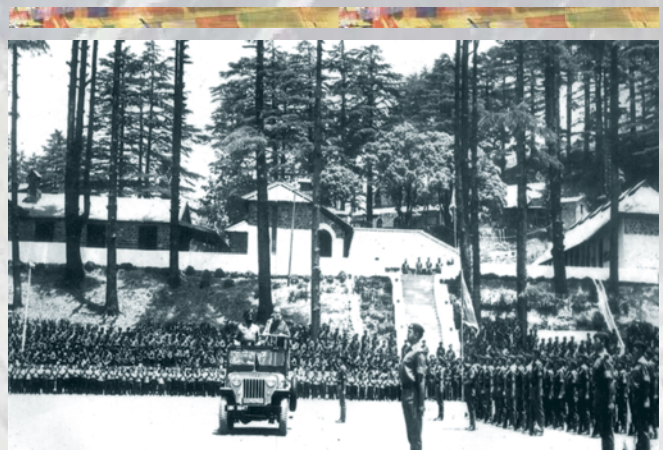


During the Bangladesh Operations

Based in Chakrata, Uttarakhand, the SFF first worked under the supervision of the Intelligence Bureau, and later, the Cabinet Secretariat. The Force fought on India's side during the Bangladesh Operations and more recently during the Kargil War and on the Siachen Glacier.



On the glacier



The Dalai Lama inspects the '22s' in Chakrata (1972)